



**STRATA**  
SUPERIOR WELDING PRODUCTS

MIG ARC TIG **400A**

**ADVANCEMIG400C**

  
**400A**  
Max Output (MIG)

  
**4.0mm**  
Max Electrode Size

  
**32A 400V**  
THREE-PHASE



\*Available in package versions.



## 400A Three-Phase Compact Synergic MIG/ARC/Lift TIG Inverter Welder

- ✓ **Powerful 400A high duty cycle output in a compact size** - Ideal for heavy duty site work
- ✓ **Can be used as compact unit, or with separate wirefeeder** - Ultimate flexibility for every job
- ✓ **Intelligent synergic system** - Easily set parameters by material type, wire size and work thickness
- ✓ **Arc air gouging capability**
- ✓ **IGBT Module Inverter Technology** - Smooth & stable output, increased reliability, high duty cycle
- ✓ **4 Roll Geared Industrial Wire Feed Unit** - Powerful and smooth wirefeeding
- ✓ **MIG Waveform (Inductance) Control** - Greater control of the arc for smoother welding results
- ✓ **Adjustable secondary settings such as pre flow, post flow, burn back and soft start** - Greater control for MIG welding operation
- ✓ **2T/4T/ Bi - Level, Spot Weld Trigger Modes**
- ✓ **Lift TIG operation with down slope and remote current control ability**
- ✓ **Spool Gun Ready**
- ✓ **Production tested with 550V** - Extreme stress testing in production for rugged reliability.
- ✓ **Intelligent Protection System** - Temperature, voltage and current sensors for increased reliability & safety
- ✓ **Generator Friendly** - Designed to work with generator power supply and protect from power surges.
- ✓ **Phase Loss Protection** - Machine automatically shuts down if power supply phase loss occurs, to prevent damage.
- ✓ **Power Source Wind Tunnel Cooling Construction** - Protection against environmental contamination
- ✓ **Quick connect inlet gas fitting** - Tool-less easy connection of gas supply to machine

Description	Details
POWER SOURCE DIMENSIONS (LxWxH)	670 x 250 x 445mm
WEIGHT	23kg
INPUT POWER SUPPLY	400V AC 3 Phase 32A 50/60Hz
INPUT POWER SUPPLY TOLERANCE	+/- 20%
MAXIMUM INPUT CURRENT	30A
GENERATOR CAPACITY	20kVA
MIG CURRENT OUTPUT	40-400A
MIG OUTPUT VOLTAGE	16V-34V
MMA O/C VOLTAGE	67V
MIG DUTY CYCLE	400A@60% 310A@100%
WIRE FEEDING SPEED	2.4-18m/min
MMA CURRENT OUTPUT	10-400A
MMA DUTY CYCLE	400A@60% 310A@100%
TIG CURRENT OUTPUT	10-400A
TIG DUTY CYCLE	400A@60% 310A@100%

Description	Details
TIG SYSTEM	Internal Solenoid Gas Control, Lift Ignition
MIG DRIVE ROLLERS	0.6/0.8/0.9/1.0/1.2mm V Groove 0.8/0.9/1.0/1.2mm Knurled 0.8/1.0/1.2mm U Grooved
INSULATION CLASS	IP23
MIG WIRE SPOOL SIZE	D200/D300, 5KG/15KG
POWER EFFICIENCY	80%
POWER FACTOR	0.7
STANDARDS	AS/ IEC60974-1:2012
WARRANTY	48 Months

### Includes:



**ADVANCEMIG400C**  
User guide, specs, videos

[LEARN MORE](#)



## MIG Inverter Welder Accessories & consumables

○ Standard ● Optional ☆ Common Consumables

ACCESSORY:		ADVANCEMIG400C
Arc Leads	○	17479
Earth Leads	○	17478
MIG Torch	○	MT360-4E
	●	XP400A-40E/MT360-3E + MTL2432T
Argon Regulator	○	GR101AR-2FL
	●	GR105CO2
Gas Hose	○	17844 + 31104
MIG Starter Kit	●	MB36KIT
Push-Pull Gun	●	37692
TIG Torch	●	17374
Gouging Torch	●	GTK4000
Spool Gun	●	34302
Drive Roller 'V' Groove 0.6 - 0.8mm	○	17835 (x2)
Drive Roller 'V' Groove 0.9 - 1.0mm	-	-
Drive Roller 'V' Groove 1.0 - 1.2mm	-	-
Drive Roller Knurled 0.8 - 0.9mm	●	17838 (x2)
Drive Roller Knurled 1.0 - 1.2mm	●	17839 (x2)
Drive Roller Knurled 1.2 - 1.6mm	-	-
Drive Roller U Groove 0.8 - 1.0mm	●	17841 (x2)
Drive Roller U Groover 1.2 - 1.6mm	●	17842 (x2)

### Automatic Welding Helmets

- ✓ Variable Shade
- ✓ Complete with batteries ready to go
- ✓ Suitable for automotive DIY and industrial use.

WT180	Variable Shade 9-13
WT350	True Colour, 4 Sensor with grind function
SV3000	True Colour, Shade 5 - 13 + Grind Function (MIG/TIG/MMA/Plasma)
SV4000	Panoramic view with auto darkening side panels, Shade 4 - 13 + Grind Function (MIG/TIG/MMA/Plasma)
DW7000XL	True Colour, with grinding visor. Shade 5 - 13 + PRSL Filtration System (MIG/TIG/MMA/Plasma)

### Welding Magnets

WT-WMG03	3" Welding Magnet
WT-WMG05	5" Welding Magnet



### Chipping Hammer

- ✓ Heavy duty chipping hammer for the trade

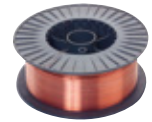
WT-SPCH	Spring Handle Chipping Hammer
---------	-------------------------------



### Mild Steel MIG Wire - ER70S-6

- ✓ Copper coated MIG wire for general purpose welding of mild steel using CO<sub>2</sub> or argon based shielding gases.

MW5KG06	5kg Spool - 0.6mm MIG wire (D200)
MW5KG08	5kg Spool - 0.8mm MIG wire (D200)
MW5KG09	5kg Spool - 0.9mm MIG wire (D200)
D300 MW15KG08S	15kg Spool - 0.8mm MIG wire (D300)
D300 MW15KG09S	15kg Spool - 0.9mm MIG wire (D300)
D300 MW15KG10	15kg Spool - 1.0mm MIG wire (D300)
D300 MW15KG12	15kg Spool - 1.2mm MIG wire (D300)



### Wire Feeder

39557	Separate Wire Feeder
39558	10M Machine SWF Interconnect Lead

### Water Coolers

- ✓ Suitable for AdvanceMIG machines with a water cooled torch set up (not incl.)
- ✓ Induction motor with safety pressure switch.

22109	Industrial Integrated Water Cooler 400V w/ Connection Cable
-------	-------------------------------------------------------------



### Industrial Storage Trolley

22115	Industrial Storage Unit V2
22108	Integrated Industrial Trolley



WT180



WT350



SV3000



SV4000



DW7000XL comes with battery powered air respirator.